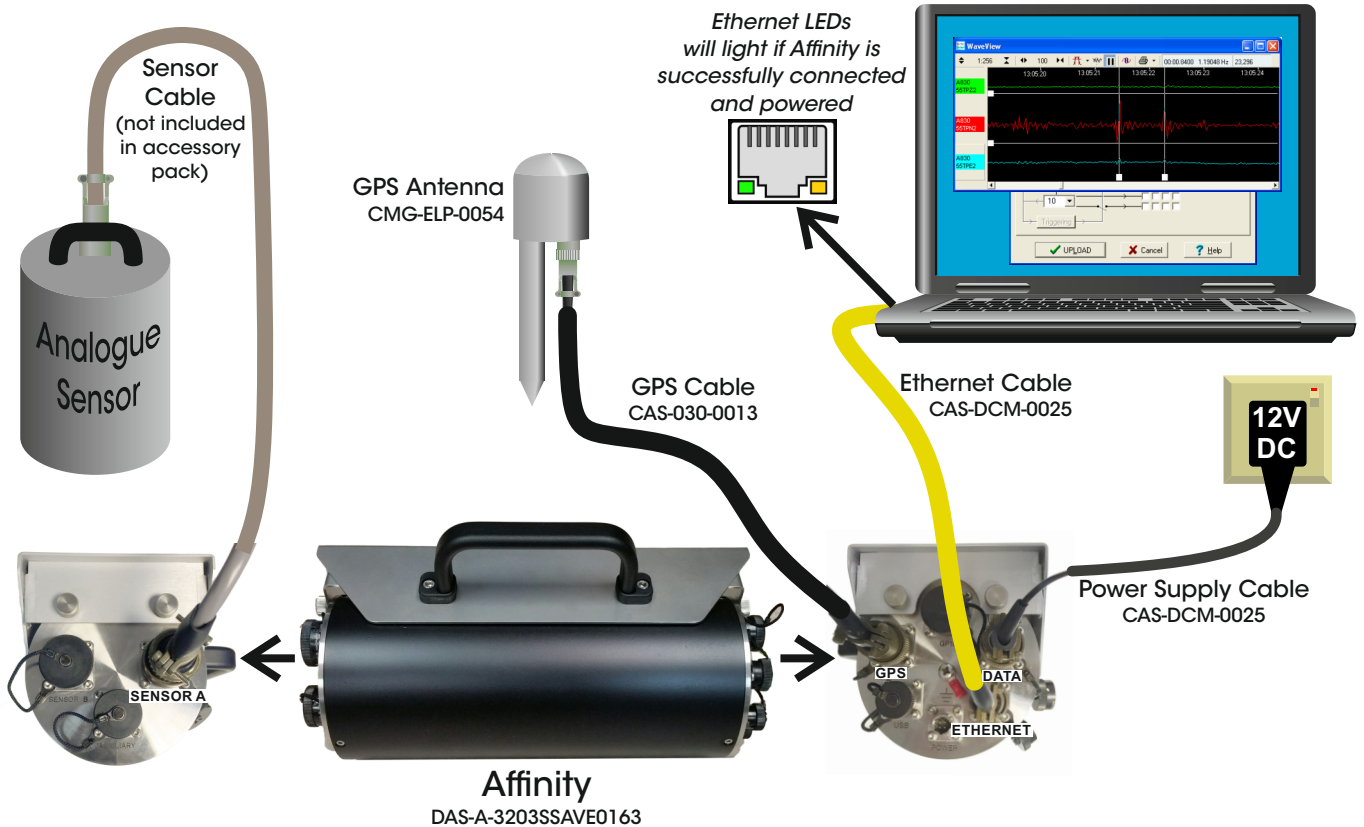


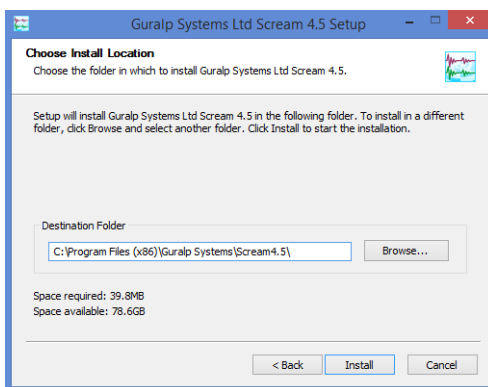
QUICK-START GUIDE

Initial Hardware Setup



Communicating with the Affinity

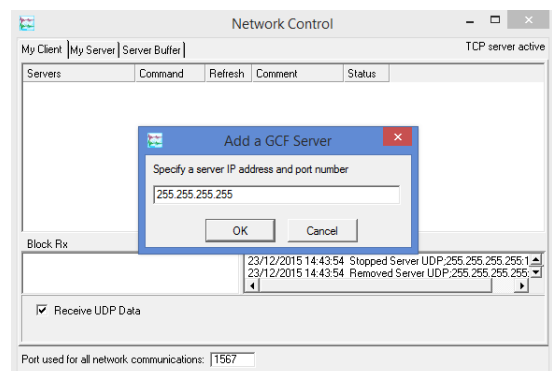
1



Install Scream! software on your computer (supplied on the enclosed Güralp USB pen drive). Launch Scream!

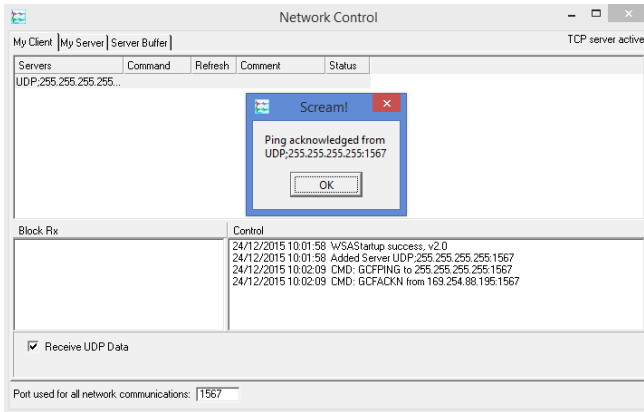
2

In the "My Client" tab of Scream's Network Control window, ensure that 'Receive UDP Data' box is checked. Right-click in the "Servers" box and select "Add UDP Server". In the new window, type: "255.255.255.255".



Quick-Start Guide

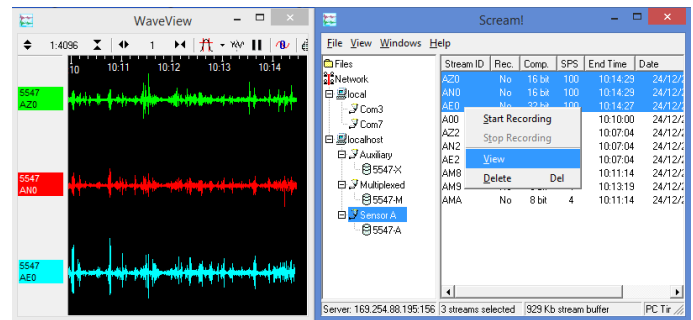
3



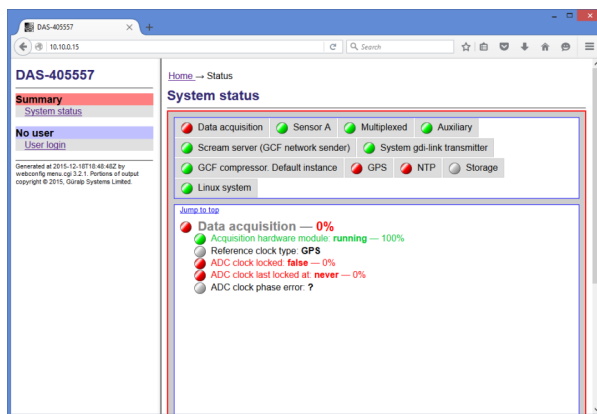
Right-click the newly added server and select “GCFPING”. This ping will be acknowledged by a successfully connected Affinity. The IP address of the Affinity will be shown in the Control window of the “My Server” tab.

4

In the “My Client” tab, add the Affinity’s IP address as a UDP server. Right-click this instrument server and select “GCFSEND”. In the main Scream! window, choose sensor streams, right-click and select ‘View’ to show real-time data.



5



Once the IP address of the acquisition module has been set or determined, enter this IP into the address bar of a web browser to connect to the Affinity's web interface.

6

In the left-hand menu, there is an option to log-in. Click on the link and enter the default username of “root” and password of “guralp3”. Change this password immediately by clicking on “Change password” in the sidebar.

